

**Traffic and Pedestrian Safety Committee  
Agenda  
Wednesday, October 19, 2011  
2131 Pear Street, Pinole, CA 94564  
Council Chamber  
7:00 p.m. Regular Business Meeting**

1.	<b>Call to Order – Pledge of Allegiance</b>	
2.	<b>Roll Call</b>	Ana Morales
3.	<b>Approval of Minutes from September 21, 2011</b>	
4.	<b>Citizens to be heard – for items not on the Agenda</b>	
5.	<b>Continued Items:</b> <b>A. High School Reconstruction</b> Recommended Action: Receive presentation by the West Contra Costa School District. Provide input to the District and City of Pinole Staff.	Keith Holtslander/ Bill Savidge / Dean Allison
6.	<b>Oral Reports:</b> <b>A. Committee Members</b> <b>B. Dean Allison</b>	Committee Members Dean Allison
7.	<b>Adjourn to the Next Meeting</b> <i>Recommendation: Adjourn to next Regular Meeting On November 16, 2011</i>	

POSTED: Thursday, October 13, 2011 at 3:00 p.m. at City Hall

  
\_\_\_\_\_  
Ana Morales, Secretary, City of Pinole



**Draft**  
**Traffic and Pedestrian Safety Committee Meeting**  
**Minutes**  
**Meeting Date: September 21, 2011**

**I. Call to order by:**

Faith Dunham-Sims at 7:05 p.m.

**II. Roll Call:**

**Committee Members present:**

Faith Dunham-Sims, Chair  
Charles Hammack, Vice-Chair  
Joe Ojeda, Member  
Marcia Kalapus, Member  
Madeline Crandall, Member

**Absent:**

Doug Taylor, Member  
Paula Guaraglia, Member

**Staff Members present:**

Dean Allison, Development Services Director / City Engineer  
Ana Morales, Secretary

**Also present:**

E. Keith Holtslander, WCCUSD  
Ellen Poling, Fehr & Peers  
Michael Terry, WLC Architects  
Carylon Tyler  
Sue Kahn, PVHS Principal

Commander Matt Messier was introduced to the Committee.

Officer Justin Rogers was also introduced to the Committee. He is our new motorcycle traffic patrol.

**III. Approval of Minutes from August 17, 2011:**

**Action: Faith Dunham-Sims motioned to approve the minutes as presented, Charles Hammack seconded. Motion carried 5– 2 absent.**

**IV. Citizens to be heard (items not on the agenda):**

None

**V. Continued Item:**

**A. High School Reconstruction**

**Recommendation: Receive presentation from the West Contra Costa Unified School District (WCCUSD). Provide input to the District and City of Pinole Staff.**

**Action 1: Charles Hammack made a motion to accept alternative #3, which includes two new coordinated traffic signal systems at Shea Drive / Granada Court and the school exit. Joe Ojeda seconded. Motion carried 5-2 absent.**

**Action 2: Faith Dunham-Sims made a motion for the City Staff and School District Staff to continue to work with the library and the County to relocate the entrance continues to work with the Church for interim parking while the High School is under construction, and continue to work on the parking designation for students and staff for ultimate condition. Joe Ojeda seconded. Motion carried 5-2 absent.**

**At our next meeting on Wednesday, October 19, 2011, the residents should be invited to the meeting. The meeting will be held in the Council Chamber. Also, we request the presence of School District Staff, School District Traffic Engineers, City Staff and City's Traffic Engineer.**

## **VI. Oral Reports:**

### **A. Committee Members**

**Marcia Kalapus:** asked that throughout the City, red curbing and pavement markings need to be refreshed, especially on Tara Hills Drive at Appian Way.

**Commander Matt Messier:** informed the Committee about two big events coming up: a Memorial for Jeff McCoy in the downtown area and Homecoming Parade for Pinole Valley High School to take place on Friday, October 21, 2011, from 1:30 – 3:30 p.m. from Pinole Valley Park down to Pinole Valley High.

### **B. Dean Allison:** no comments.

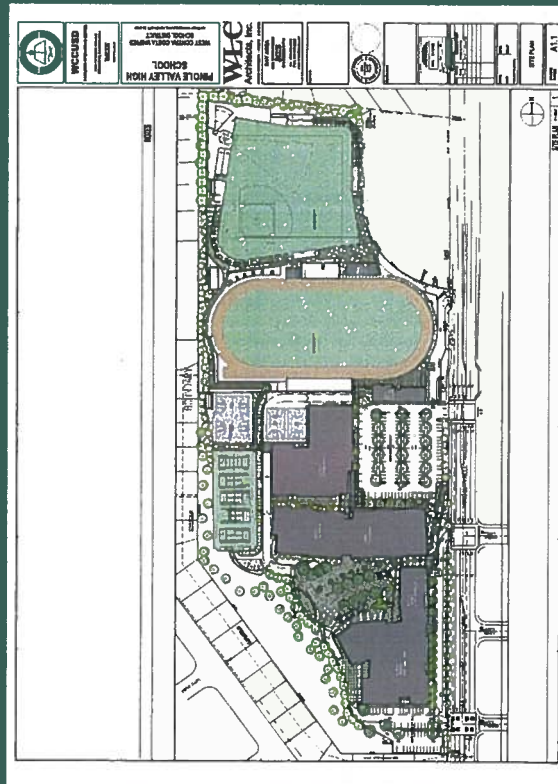
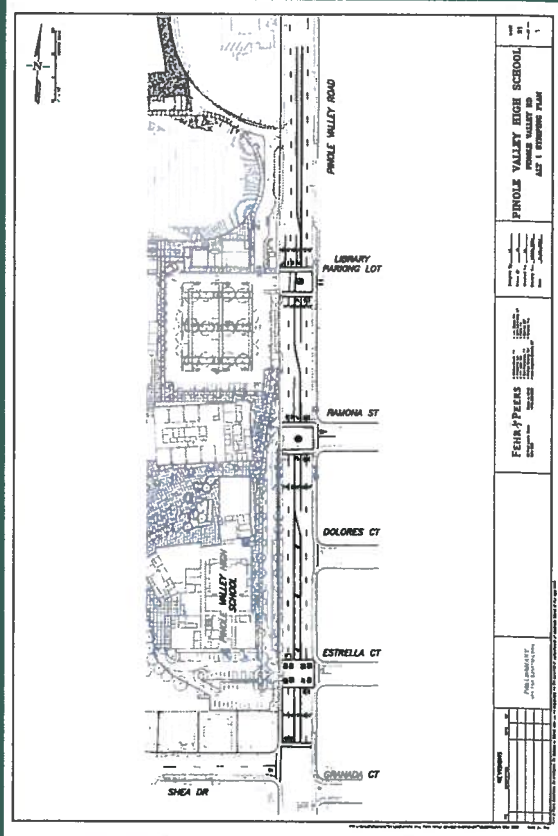
## **VII. Adjournment**

Adjourned to the next regular meeting on October 19, 2011.  
***Adjourned at 8:25 p.m.***

***Next Meeting  
October 19, 2011  
in the Council Chamber***

# Traffic and Transportation Analysis Pinole Valley High School Reconstruction

Fehr & Peers | September 21, 2011

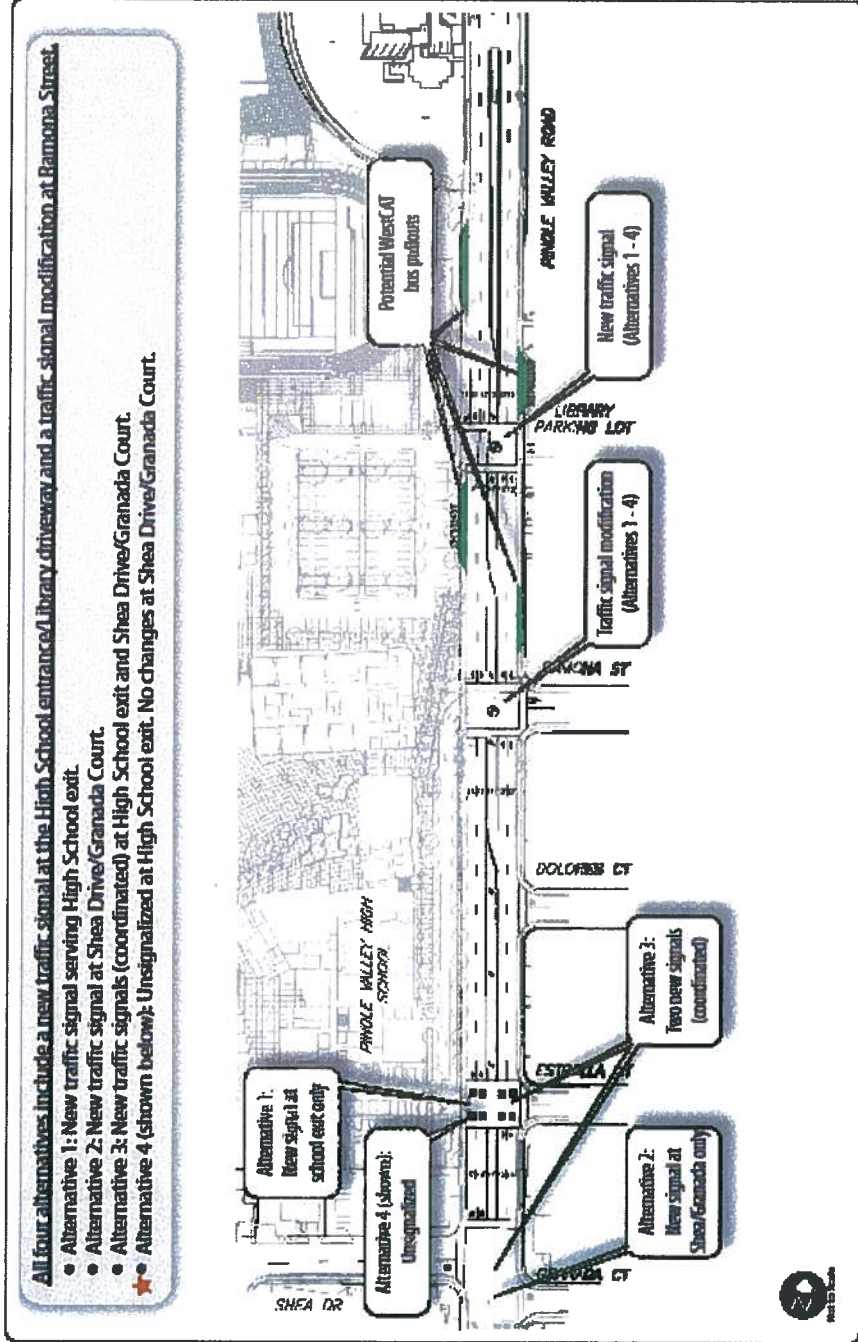


## *Discussion Overview*

---

- I. Recap of last meeting on 8/16/11
  - I. Four alternatives analyzed
  - II. Evaluation matrix
  - III. Preferred alternative
  
- II. Temp campus parking
  - I. Preliminary design: 60 spaces on-site; 80 spaces off-site; multiple on-street spaces
  - II. 250' drop-off length

# Draft Transportation and Traffic Analysis



# Evaluation Matrix

TABLE 5  
PINOLE VALLEY HIGH SCHOOL TRANSPORTATION PLAN  
ALTERNATIVES EVALUATION MATRIX

Access/Circulation Option	On-site congestion/ Ease of drop-offs/pick-ups	Ease of making left turns out of drop-off aisle exit	Ease of user understanding and safety/sight distance	Average delay at Shea/Granada	Effects on Corridor Travel Times	Controlled Ped Crossing Opportunities
Alternative 1 -- Signal Only at Drop-off Exit	Yellow	Green	Red	Green	Green	Green
Alternative 2 -- Signal Only at Shea/Granada	Red	Red	Red	Yellow	Green	Green
Alternative 3 -- Two signals (at Drop-off Exit and at Shea/Granada)	Green	Green	Yellow	Yellow	Green	Green
Alternative 4 -- No Signal at Either Location	Yellow	Yellow	Yellow	Green	Green	Yellow

Notes:

\* NB = northbound, SB = southbound

Green - good

Yellow - OK

Red - poor

Fatal Flaw

Source: Fehr & Peers, August 2011.





**CITY OF PINOLE  
TRAFFIC AND PEDESTRIAN SAFETY COMMITTEE**

**5A**

**OCTOBER 19, 2011**

**TO: TRAFFIC AND PEDESTRIAN SAFETY COMMITTEE**

**FROM: DEAN ALLISON, DEVELOPMENT SERVICES DIRECTOR / CITY  
ENGINEER**

**SUBJECT: RECONSTRUCTION OF PINOLE VALLEY HIGH SCHOOL**

---

**RECOMMENDATION**

Receive input from the surrounding neighborhood on the roadway improvements to Pinole Valley Road proposed by the West Contra Costa Unified School District as part of the High School reconstruction and provide direction to Staff.

**DISCUSSION**

The West Contra Costa County School District is proposing to reconstruct the Pinole Valley High School. As part of the reconstruction, improvements are proposed to Pinole Valley Road to relieve school time traffic congestion.

To identify the needed improvements, the District conducted traffic studies including counts and modeling. At the September 21, 2011 meeting of the Traffic and Pedestrian Safety Committee, the Committee selected one of the three options proposed by the District.

The selected option includes:

- A large on campus drop off area.
- Two parking lots which provide 57 additional on-campus parking spaces than is currently provided.
- Two new traffic signals, one at the entrance to the proposed on-site parking at the north end of campus, and a second signal controlling two intersections, Shea Drive/Pinole Valley Road, and Estrella Court/Pinole Valley Road.
- The elimination of 44 on-street parking spaces along Pinole Valley Road adjacent to the High School.
- Restriping Pinole Valley Road to include a center left turn lane, to ease congestion.

- Three new bus turn outs; two on the westerly side of the roadway, and one on the easterly side of the roadway to allow buses to pull out of the travelled way to pick up or drop off passengers.
- An onsite bus parking area adjacent to the athletic field, to allow for buses transporting visiting teams to pull off the road.
- The re-configuration of the existing driveway at the library to align with the new traffic signal and school driveway at the northerly end of campus.

The proposed plan leaves several issues unresolved, which Staff from the School District and City continue to work on.

The unresolved issues include:

- Designation of Student Parking versus Staff/Faculty Parking. In the aggregate the proposed site plan provides 57 more parking spaces on campus than is currently provided. However, the District has not provided a plan on how the parking spaces will be split between students and faculty/staff. It is important that District's parking plan provide adequate parking spaces for students otherwise students will park in the residential roadways that surround the campus. (See attached summary of parking).

Solution being discussed: The District will need to provide more clarification on the parking plan.

- Severe shortage of onsite parking during construction. As currently proposed only 60 on campus parking spaces will be provided during the two – three year period it will take to construct the improvements.

Solution being discussed: The District is working with nearby property owners to create additional nearby parking spaces.

- Revisions to the parking lot at the southerly side of campus As currently provided there is a traffic conflict between vehicles leaving campus from the drop off area, and vehicle leaving campus from the parking lot at the southerly end of campus.

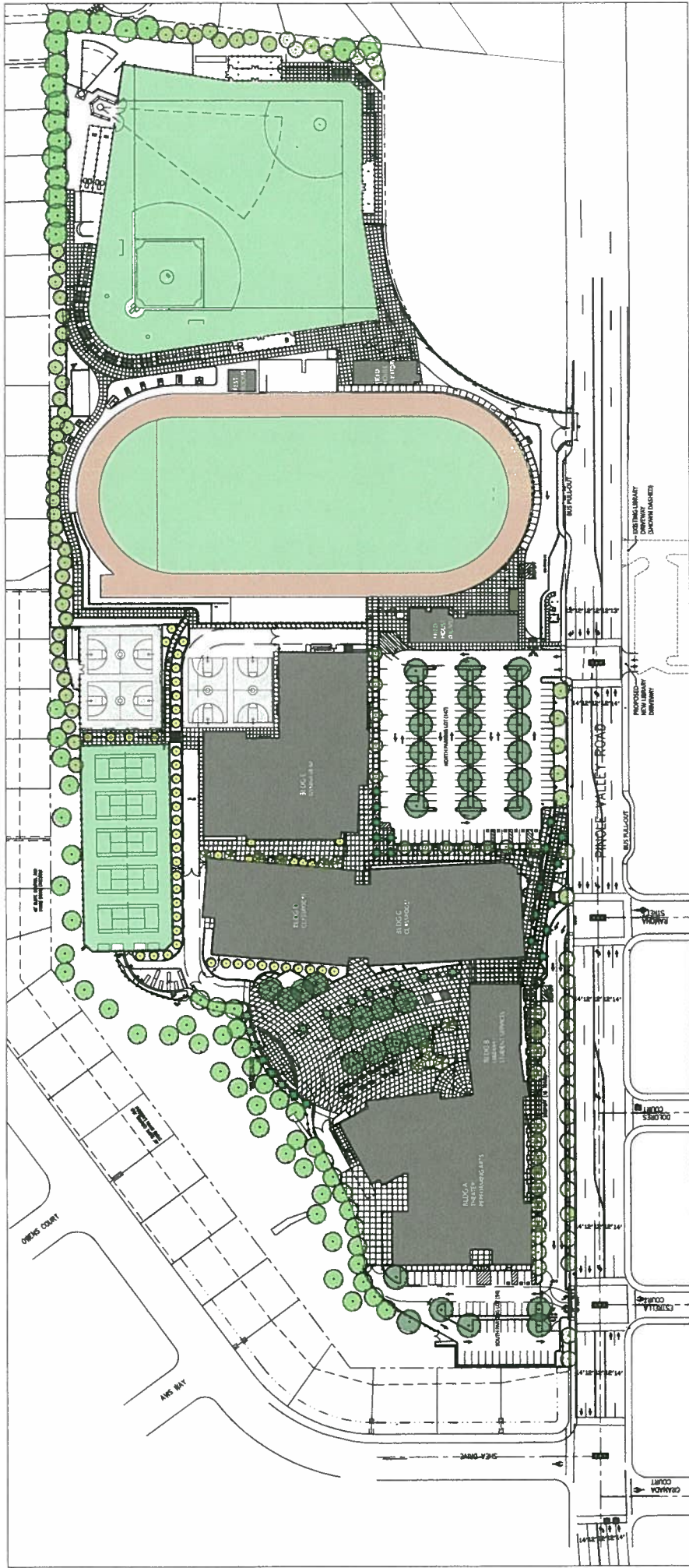
Solution being discussed: The District's Traffic Engineer is looking to propose changes to avoid the conflict.

At the September 21, 2011, the Committee requested Staff to notify the surrounding neighborhood and invite them to the October 19, 2011 committee meeting to solicit input on the proposed plan.

One particular issue on which the City is seeking input, is the possibility of a parking permit program in the nearby residential areas to discourage student. Under such a program, vehicles parking in designated residential areas must display a parking permit, or be subject to a parking citation.

### **ATTACHMENTS**

Proposed Improvements  
Summary of Parking  
October 3, 2011 letter to the neighborhood



# PINOLE VALLEY HIGH SCHOOL CAMPUS RECONSTRUCTION

## SITE PLAN

SEPTEMBER 30, 2011



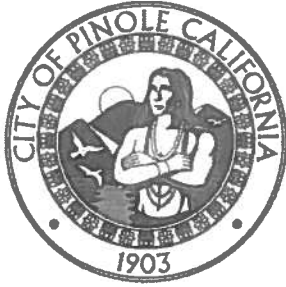
**WLC**  
Architects, Inc.

# Summary of Parking

	Currently			After Construction			During Construction
	Total	Student	Faculty/Staff	Total	Student	Staff/Faculty	Total
Existing onsite Upper Lot	69						60
Existing onsite Lower Lot	75						
On Street	44						
Proposed Northerly Lot				147			
Proposed Southerly Lot				54			
	188			201			60

Need Clarification from the School District

Need Clarification from the School District



# CITY OF PINOLE

## Development Services Department Public Works

2131 Pear Street  
Pinole, CA 94564

Tel: (510) 724-9010  
Fax: (510) 724-4921

October 3, 2011

Property Owner / Resident

Subject: Notice of a Public Meeting

Residents and Property Owners:

The purpose of this letter is to invite you to a meeting of the City's Traffic and Pedestrian Safety Committee to discuss the reconstruction of Pinole Valley High School. The meeting will take place at **7:00 p.m. on Wednesday evening October 19, 2011 at City Hall, 2131 Pear Street.**

The West County Unified School District is proposing to reconstruct the High School. As part of that construction, improvements are proposed along Pinole Valley Road to relieve school time traffic congestion. The District and Committee have been working together to propose improvements.


The proposed improvements include:

- Two new driveways to High School
- Two new traffic signals along Pinole Valley Road. One signal is proposed at the Shea/Pinole Valley Road and Estrella/Pinole Valley Road intersections, a second new signal is proposed at the new entrance to the High School near the football field.
- Restriping of Pinole Valley Road to include left turn lanes
- Elimination of 44 on-street parking spaces along Pinole valley Road to accommodate the left turn lanes

The City is also considering implementing a neighborhood permit parking program aimed at reducing student parking on neighborhood roadways. Under such a program all vehicles parking on neighborhood roadways must display a permit.

The City and Committee hope you are able to attend the meeting and provide input. Copies of the proposed improvements are available at City Hall. Should you have any questions please contact me at City Hall at 724-9010.

Sincerely,

A handwritten signature in black ink, appearing to read 'DEA' with a stylized flourish at the end.

Dean Allison  
Director of Development Services / City Engineer

cc:  
Weekly Report for October 7, 2011  
City Council Members  
Traffic and Pedestrian Safety Committee Members  
Pinole Library  
Project File  
Chron File